

**Combined
Metal
Radiation
Detector**

«CoMRaD-1000»

**HAND-HELD
COMBINED METAL
AND GAMMA
RADIATION
DETECTOR**



- Metal
- ● Power
- γ Gamma radiation

TYPICAL APPLICATIONS

- Airports and seaports
- Custom and border protection
- Events and building security
- Critical infrastructure protection

FUNCTIONAL HIGHLIGHTS

- Ultimate sensitivity
- Self-calibrating to different backgrounds
- Rugged and lightweight
- Sound and vibro- alarm



DESCRIPTION

The new model «ComRad-1000» is easy to use hand-held metal detector with additional function to detect and locate radioactive substances in the scanned baggage and personnel. During just single scan the «ComRad-1000» allows simultaneous detection of metals and radioactive substances thus substantially saving clearance time, number of instruments used at the point of checking and improving security.



The unique operational advantage of the «ComRad-1000» that makes it different from any existing analogues is sensitivity of gamma-detectors, that make the instrument compliant with ANSI N42.32 standard for personal radiation detectors (PRDs) used in homeland security.

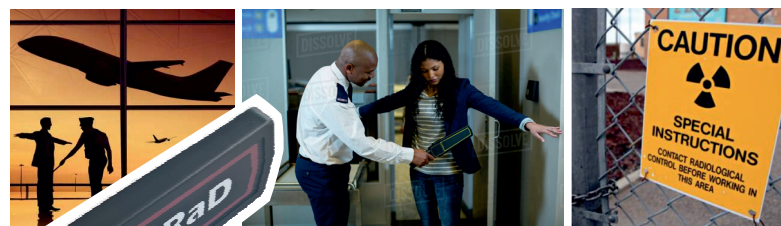
SPECIFICATIONS

Three-color LED indication	Green LED/ Yellow LED = ON/ Low battery Blue LED = Gamma Alarm Red LED = Metal Alarm
Gamma Energy range	from 0.015 to 3.0 MeV
Detector, gamma	3cc CsI(Tl) with SiPM
Alarm Response Time	< 2 sec

Battery	one 9V (included)
Battery life time	150 hours
Weight	0,42 kg
Dimensions	420x85x45mm
Ingress protection	IP44

The main characteristics of the search for metal objects:

Detection Object	Detection Range	Scanning speed
Metal container for Radioactive materials	200 MM	from 0 to 0,5 m/c
Steel plate 100x100x1 MM	100 MM	
Pistol	200 MM	
Knife	130 MM	



CoMRaD
Your Security Comrade !

RT «RADATEH, Ltd»

220007, BELARUS, MINSK, FABRICIUS Str, 8
Tel. +375 17 238-83-67
E-MAIL: linfo@comrad.biz
www.comrad.biz

